



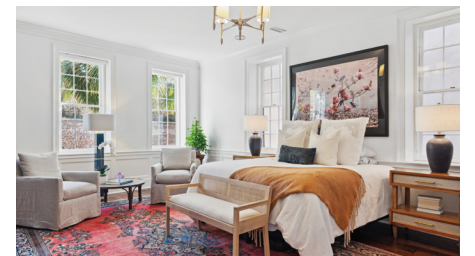
1972 Long Creek Rd | Wadmalaw Island | Private 6-Acre Waterfront Estate
 Approx. 5,266 Sq. Ft. | 4 BDs | 5½ BAs | Dock | Pool | 3-Car Garage
 Lindsay Malanos, GRI, CIPS | 843.343.8866 | lindsaymalanos@bellsouth.net



City House Charleston | Luxury Condos in the Heart of the French Quarter
 C. 2024 | Full Time Staff & Concierge Services | Rooftop Pool & Lounge
 Butler Derrick | 843.714.4054 & Barry Kalinsky | 843.442.9227



18 Logan Street | C. 1870 | South of Broad | Queen Anne Era Home
 Approx. 3,670 Sq. Ft. | 4 BDs | 3½ BAs | Double Piazzas | Pool | Garden Oasis
 Charles Sullivan | 843.367.8807 | csullivan@carriageprop.com



8 Queen Street | C. 1796 | French Quarter | Perfect Location
 Approx. 3,276 Sq. Ft. | 4 BDs | 2½ BAs | Completely restored in 2015-2016
 Charles Sullivan | 843.367.8807 | csullivan@carriageprop.com